



Karnali Academy of Health Sciences, Jumla



Presented by:
Prof. M. N. Marhatta, Dean

KAHS working Districts in Map



Jumla	Humla	Dolpa	Mugu	Kalikot	Jajarkot	Bajhang	Bajura	Asham
Karnali					Bheri	Seti		

Philosophy

- Backward and Remote Karnali Area
- Low health and socioeconomic indicators

9 Districts:

***Dolpa, Humla, Mugu, Jumla, Kalikot,
Jajarkot***

Bajang, Bajura, Acham

Additional district of Province # 6

Rukum, Dailekh, Surkhet, Salyan

- Quality health service
- Health training Education .. Local HR

Background

Karnali Academy of Health Sciences (KAHS):

- Established in October 20, 2011 (2068/07/03), by an Act of parliament of Nepal.
- People movement
- Liaison MOH

KARNALI ACADEMY OF HEALTH SCIENCES



Mission

- Prepare health professionals to deliver quality health care to marginalized /backward areas

through

- Educational excellence, innovative research, patient Centered care, public health and community
- Engagements

Vision

- Health promotion, prevention of diseases, Health care,
- total human development through health

Through

- Education, practice, researches, scholarship

Goals

- Upgrade quality of health services
- Train competent and socially responsible health professionals
- Advancement through research activities
- Medical science education to local deserving students
- Collaboration with the NHS
- Academic activities with inter-institutional alliance

kAHS Infrastructure

LAND

- Hospital owned land: **17454 sq. m (34.3 Ropanis)**
- Academic programme: **1500 Ropani** (acquisition process) in 3 location.

Hospital Block

- Administrative block
- Emergency, OPD building,
- Inpatient Ward: General, Surgery, Orthopedic, Maternity, pre/post delivery and pediatric,
- Diagnostic i.e. USG, X-ray, Lab, ECG etc
- Operation Theatre and Post Operative ward
- **300 beds inpatient block (Near to complete)**

Academic Block

- School of Nursing, School of medicine, Library, Skill lab

Resident/Hostel

- Doctor's quarter-1, Rented Resident building – 4, Hostel cum Resident - 1

Departments

Name	Prof/AP	Assist. Prof / lect	Total
• Anesthesiology	1	3	4
• Surgery	1	3	4
• Medicine	-	2	2
• Gyne/Obstetrics	-	2	2
• Orthopedics	-	2	2
• General Practice	-	1	1
• Pediatrics	-	1	1
• Community Medicine	1	1	2
• No basic Science Departments / Faculties			

HUMAN RESOURCE

Category	Sanctioned	Filled	Study leave
		Permanent	
Doctors	32	32	7
Nursing staff	53	53	5
Paramedics	15	15	2
Others Technical	11	11	
Medical Recorder	1	1	
Other	39	39	
Total	151	151	14

Hospital Services

Services (In Number)		2071/72	2072/73	2073/74
OPD New Cases		23756	24426	26428
Emergency Visits		3875	3276	3506
Inpatients Admitted		2139	2429	2491
Inpatients Discharge		2139	2429	2491
Total Hospital Deaths		16	11	15
Total Delivery	ND	487	499	517
	Vacuum	21	7	8
	C/S	36	39	68
Surgery	Major	165	290	426
	Minor	2759	2579	2509
Safe Abortion Services	CAC	32	28	18
	PAC	66	35	35
Referral Cases	In			
	Out	53	120	89

Top Ten inpatient Diseases Pattern

FY 2073/74

1.	APD
2.	RTA/FRACTURE
3.	AGE
4.	URTI
5.	LRTI
6.	COPD
7.	UTI
8.	PID
9.	HEADACHE
10.	MALNUTRITION

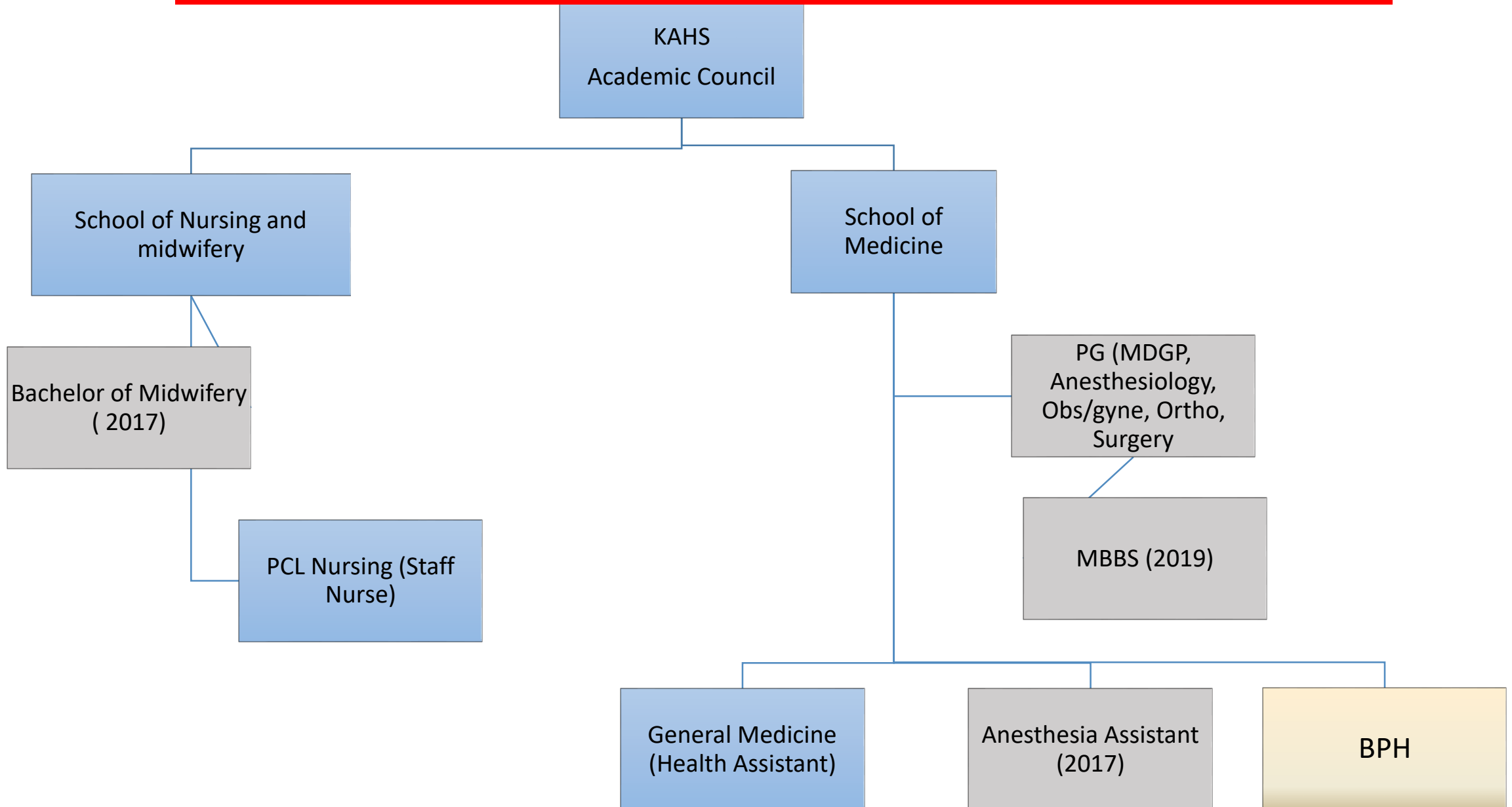
Hospital Beds

Description	Total
Sanctioned Beds	100
Operational Beds	100
Total inpatient beds including maternity and geriatric	100
Maternity	18
Geriatric	-
Emergency Department	16
Other	66

Current Academic Program

	Programme	Commencing on	No of Batch	Total Students	Remark
School of Nursing	PCL Nursing (Staff Nurse)	2013	5	117 (28)	
School of Medicine	General Medicine (Health Assistant)	2015	3	69	

Academic Programme





Progress

- Establishment 2011
- Function 2012
- 2013 KAHS Teaching Hospital
- 2013 Staff Nurse
- 2015 Health Assistant
- 2016 Leadership Gap
- 2017 New Team Straggling

Future Plan 2018

- Strengthening Clinical Departments
- Establishment of New departments:
- Dermatology, ENT, Psychiatry etc
- PG in MDGP, Anesthesiology, Obs.Gynecology, Orthopedics,Surgery
- Basic science Departments
- MBBS 2019

Working plan:

- Networking and inclusion of Health and human resources of
- 15 hospitals of 13 working districts
KAHS teaching hospital



Challenges

- Geography area and Access
- Climate
- Sociocultural factors
- Land Acquisition
- Faculties : Availability/ Retention
- New Academy
- Lack of Academic building
- Basic Science Department and Lab
- Resident for faculty and student
- Budget for New Programs

Conclusion

- KAHS is in difficulty

(Remoteness, backward ness, low socioeconomic and low health indicator)

KAHS needs special attention from government and other concerns.









Thank you